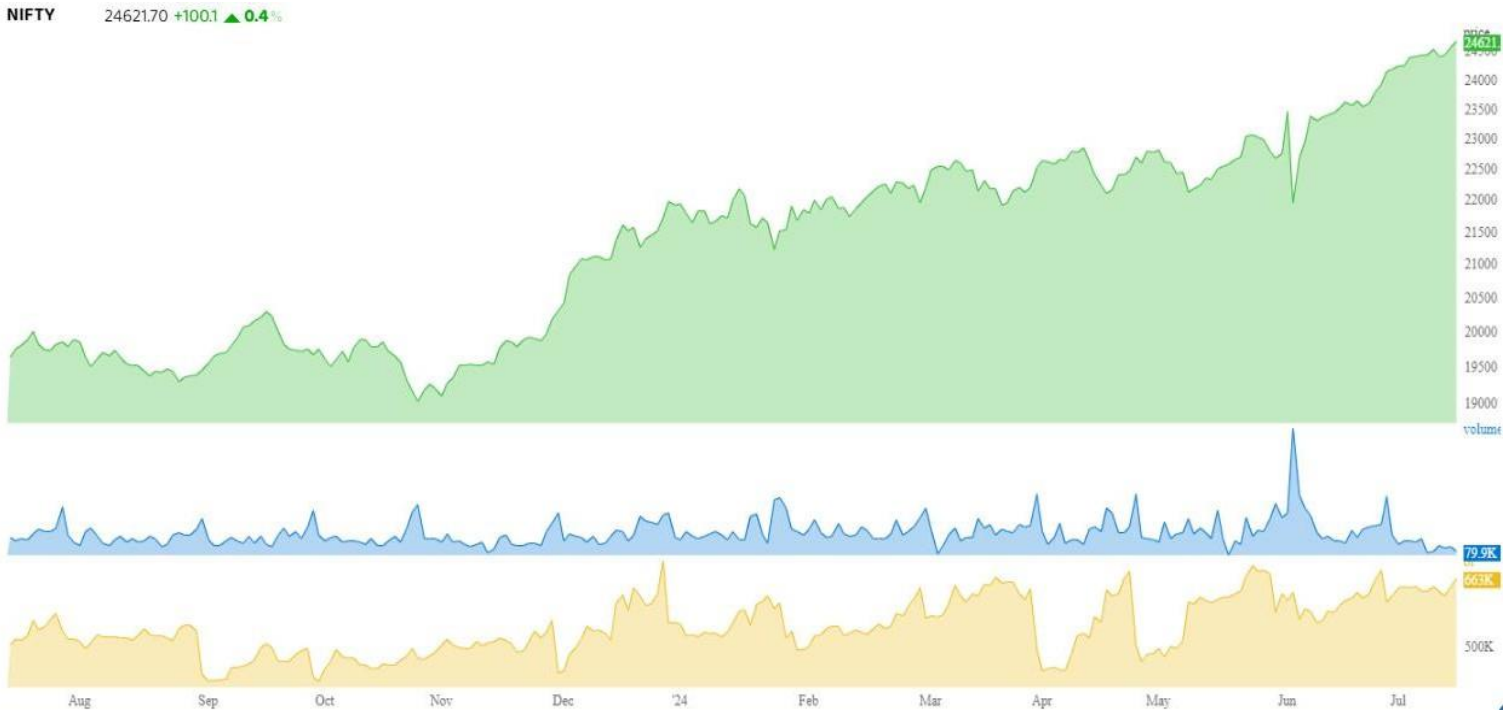


# DERIVATIVE REPORT



# Derivative Report

The Nifty index is hovering near higher levels, suggesting uncertainty or indecision among traders regarding its future direction.



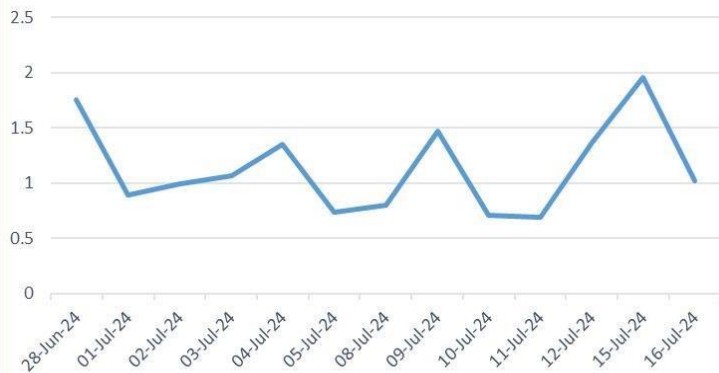
- The market is showing a Long Build-up indicated by the combined increase in Open Interest and price. The Nifty FII LS ratio has fallen to 1.02 from the previous day's 1.95, suggesting that the FIIs are sq. of their long.
- The PCR has decreased to 1.10 from the previous day's 1.17, indicating that PE writers are more aggressive than CE writers.
- There is significant open interest at 25000 CE and 24700 CE, whereas increase in open interest at 24000 PE and 24500 PE, suggesting expectations for the market to trade in a wider range of 24000-25000 and a narrower range of 24500-24700.
- The VIX has decreased to 14.22 from the previous 14.18, signifying a rise in volatility. The market is expected to move in a wider range of 24000-25000 and a narrower range of 24500-24700.

	SUPPORT	RESISTANCE		PRICE	OI
NIFTY 50	24500/24300	24700/25000	Near	24644.45	14351225
			Next	24757.25	2130500
			Far	24887.85	360800
	ADVANCE	DECLINE	AD RATIO		
NIFTY	28	22	1.27		
NIFTY F&O	147	39	3.79		



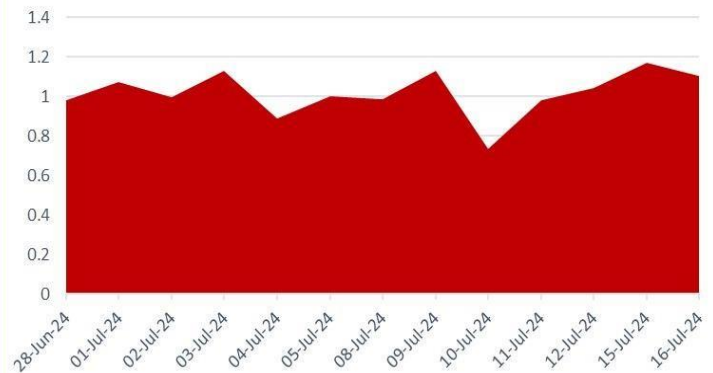
# Derivative Report

### Nifty FII LS Ratio



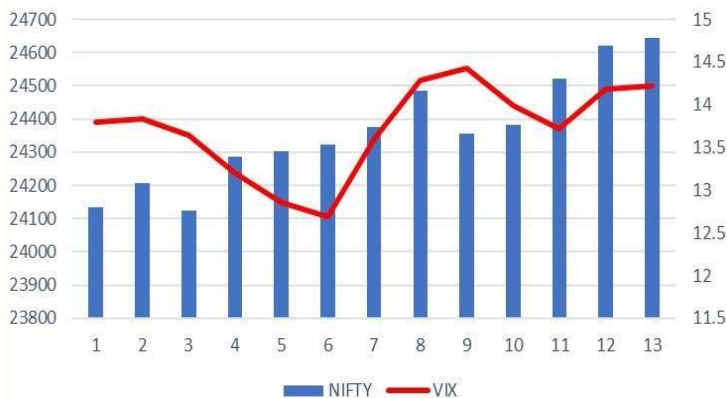
The current Long Short Ratio of Nifty FII's stands at 1.02, indicating a decrease from 1.95 compared to the previous day. This suggests that FIIs have squared off their long.

### Weekly PCR



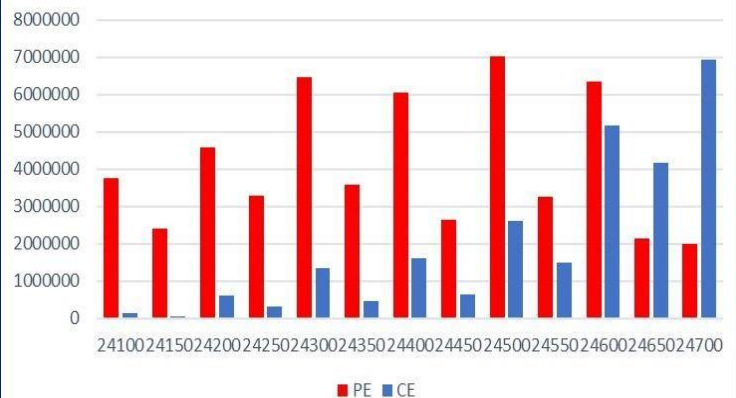
The Nifty PCR has fallen from 1.17 to 1.10, 1.10 PCR suggests that put option writers dominate call option writers, indicating that market participants anticipate the market to trade flat to positive.

### Nifty & India VIX



VIX rising from 13.72 to 14.18 shows that volatility has increased. The current VIX level of 14.18 implies a potential movement of 0.89% in either direction (1 standard deviation).

### Nifty Option OI



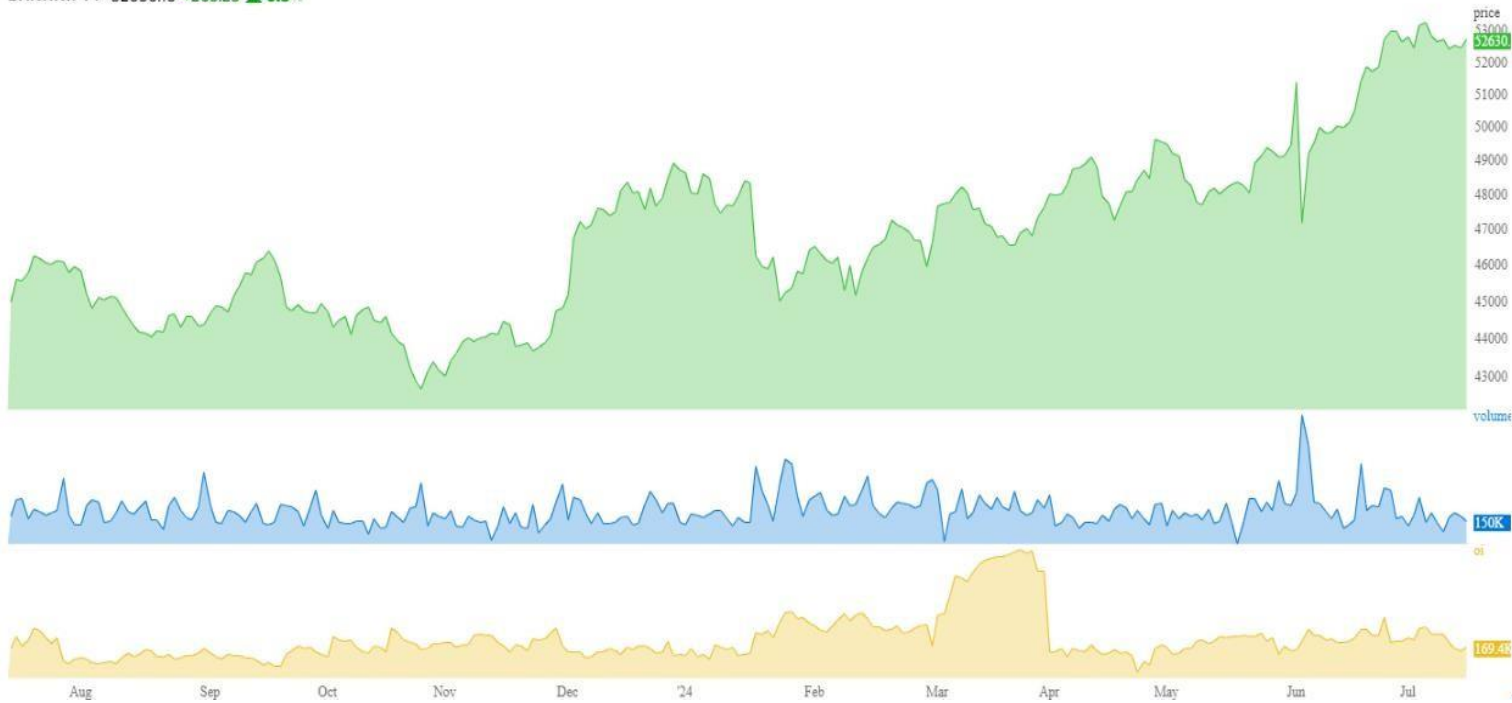
The level with the highest CE activity is 24700, followed by 24600, showing fresh Short Buildup. Short Covering was observed at 24500 and 24400 CE levels. On the PE side, the most activity was witnessed at 24500 and 24300 levels, indicating fresh Short Buildup.

# Derivative Report



## Bank Nifty at crucial level

BANKNIFTY 52630.15 +263.25 ▲ 0.5%



- The combination of a decrease in open interest and a decrease in prices suggests a buildup of long liquidation in the market. The BNF FII LS ratio is currently at 0.84, down from the previous day's 1.30, indicating that FIIs have squared off their long positions.
- The Put-Call Ratio (PCR) has risen to 1.34 from the previous day's 1.13, suggesting that put option writers are initiating new short positions.
- The highest call option (CE) activity is seen at 52500 & 55000, indicating a fresh buildup of short positions. On the put option (PE) side, the highest open interest is observed at 52500 & 52000 levels, where a fresh short buildup was observed.
- It is expected that BNF will continue to trade higher as long as it respects the 52300 level.

	SUPPORT	RESISTANCE		PRICE	OI
BNF	52300/52000	53000/53500	Near	52529.05	2084670
	ADVANCE	DECLINE	Next	52708	300990
BNF	5	7	Far	53007.65	65445

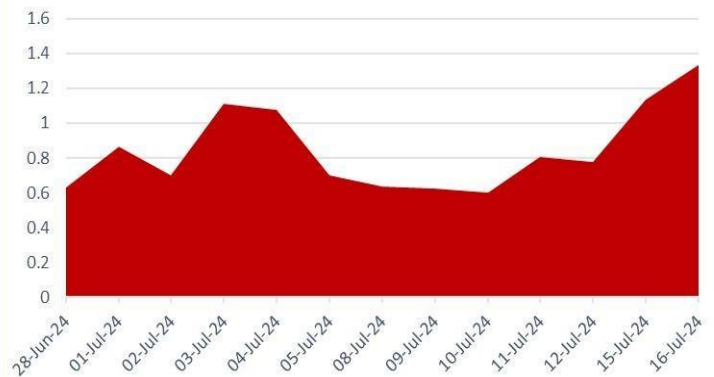
# Derivative Report

**BNF FII LS Ratio**



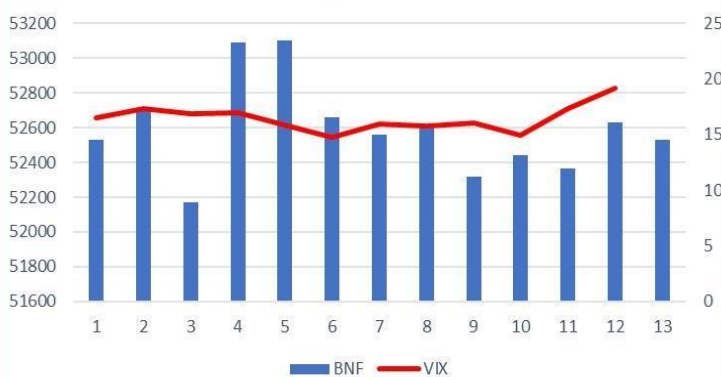
The long-short ratio in BNF for FII has dropped from 1.31 to 0.84, suggesting that FII's have sq. off their long positions. Previously, there was a 56.7% open long position, and now approximately 45.6% long positions are open in BNF.

**Weekly PCR**



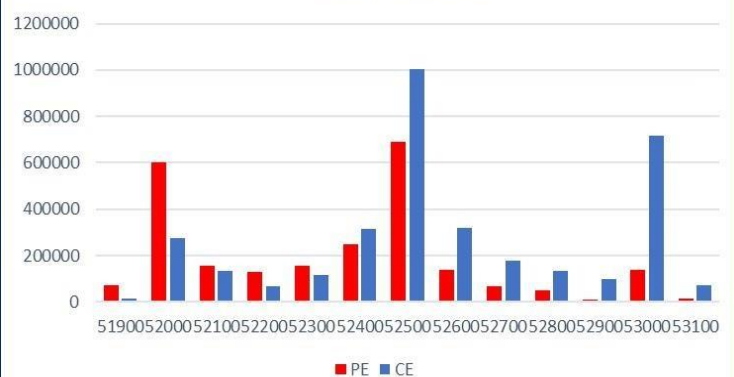
The BNF PCR has risen from 1.13 to 1.33, suggesting that PE writers are initiating new short positions.

**BNF & BNF VIX**



VIX rising signifies higher volatility. According to VIX, a 1 standard deviation change is likely to result in a 1.27% increase or decrease.

**BNF Daily Option**



The highest activity is seen at the 52500 level where maximum writing is seen which will act as a pivot level.



**Sr. Technical Equity Research Analyst  
Mr. Kunal Kamble**

Disclosure: M/s. Bonanza Portfolio Ltd here by declares that views expressed in this report accurately reflect view point with subject to companies/securities. M/s. Bonanza Portfolio Ltd has taken reasonable care to achieve and maintain independence and objectivity in making any recommendations. The Analysts engaged in preparation of this Report or his/her relative: - (a) do not have any financial interests in the subject company mentioned in this Report; (b) do not own 1% or more of the equity securities of the subject company mentioned in the report as of the last day of the month preceding the publication of the research report; (c) do not have any material conflict of interest at the time of publication of the Report. The Analysts engaged in preparation of this Report:- (a) have not received any compensation from the subject company in the past twelve months; (b) have not managed or co-managed public offering of securities for the subject company in the past twelve months; (c) have not received any compensation for investment banking or merchant banking or brokerage services from the subject company in the past twelve months; (d) have not received any compensation for products or services other than investment banking or merchant banking or brokerage services from the subject company in the past twelve months; (e) has not received any compensation or other benefits from the subject company or third party in connection with the Report; (f) has not served as an officer, director or employee of the subject company; (g) is not engaged in market making activity for the subject company. M/s. Bonanza Portfolio Ltd is a registered Research Analyst under the regulation of SEBI, the year 2014. The Regn No. INH100001666 and research analyst engaged in preparing reports is qualified as per the regulation's provision.

Disclaimer: This research report has been published by M/s. Bonanza portfolio Ltd and is meant solely for use by the recipient and is not for circulation. This document is for information purposes only and information / opinions / views are not meant to serve as a professional investment guide for the readers. Reasonable care has been taken to ensure that information given at the time believed to be fair and correct and opinions based thereupon are reasonable, due to the nature of research it cannot be warranted or represented that it is accurate or complete and it should not be relied upon as such. If this report is inadvertently send or has reached to any individual, same may be ignored and brought to the attention of the sender. Preparation of this research report does not constitute a personal recommendation or take into account the particular investment objectives, financial situations, or needs of individual clients. Past performance is not a guide for future performance. This Report has been prepared on the basis of publicly available information, internally developed data and other sources believed by Bonanza portfolio Ltd to be reliable. This report should not be taken as the only base for any market transaction; however this data is representation of one of the support document among other market risk criterion. The market participant can have an idea of risk involved to use this information as the only source for any market related activity. The distribution of this report in definite jurisdictions may be restricted by law, and persons in whose custody this report comes, should observe, any such restrictions. The revelation of interest statements integrated in this analysis are provided exclusively to improve & enhance the transparency and should not be treated as endorsement of the views expressed in the analysis. The price and value of the investments referred to in this report and the income from them may go down as well as up. Bonanza portfolio Ltd or its directors, employees, affiliates or representatives do not assume any responsibility for, or warrant the accuracy, completeness, adequacy and reliability of such information / opinions / views.

While due care has been taken to ensure that the disclosures and opinions given are fair and reasonable, none of the directors, employees, affiliates or representatives of M/s. Bonanza portfolio Ltd shall be liable. Research report may differ between M/s. Bonanza portfolio Ltd RAs and other companies on account of differences in, personal judgment and difference in time horizons for which recommendations are made. Research entity has not been engaged in market making activity for the subject company. Research analyst has not served as an officer, director or employee of the subject company. Research analyst has not received any compensation/benefits from the Subject Company or third party in connection with the research report.

M/s. Bonanza Portfolio Ltd at Bonanza House, Plot No. M-2, Cama Industrial Estate. Walbhat Road, Goregaon (E), Mumbai – 400063  
Web site: <https://www.bonanzaonline.com>  
Research Analyst Regn No. INH100001666 SEBI Regn. No.: INZ000212137